



3 bed terraced house to buy in

Derwent Street, Hartlepool, Hartlepool,
Durham, TS26 8BE

£49,000 Starting Bid

 x 3  x 1  x 1

Tenure

Freehold

On Street parking

Property features

- ✓ Three Bedroom Mid Terrace
- ✓ Courtyard to the rear
- ✓ EPC RATING D - COUNCIL TAX
- ✓ Offered With Tenant Paying
- ✓ EPC Rating D

Key Information

- ✓ Council Tax: Band A
- ✓ EPC Rating: D
- ✓ Heating supply: Gas

Description

TO BE SOLD VIA Online Auction until (13/04/2023 11:00) Fees apply.

*** Modernized Throughout ***

This lovely three bedroom mid terrace property is located close to Hartlepool town central which offers a variety of local shops, amenities, schools and transport links.

Recently undergone a full refurbishment and is done to a high standard that briefly comprises of Entrance, hallway, lounge, kitchen/dining room, bathroom and three bedrooms. This home also benefits from a courtyard to the rear, gas central heating and double glazing.

Offered with tenant paying £500PCM.

Please call the Stockton branch today for more information and to arrange an internal inspection.

Council Tax Band: A

Tenure: Freehold

Price: Starting Bid £49,000

Property Type: Terraced House

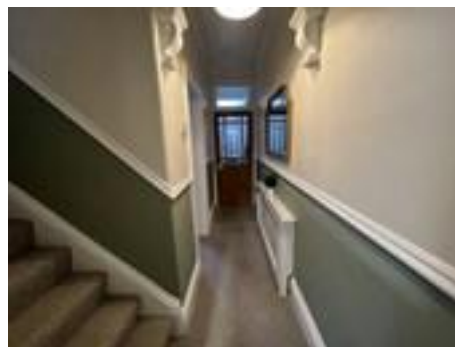
Parking: On Street

Heating: Gas

Entrance

Hallway

Doors leading to lounge, kitchen and stairs to first floor.



Lounge

3.86m x 3.69m (12'7" x 12'1")

Double glazed window to front aspect, coving, ceiling rose, Tv point, electric fire place and radiator.



Kitchen

5.43m x 2.39m (17'9" x 7'10")

Double glazed window to side aspect, fitted wall and base units, electric cooker, gas hob, one and a half sink unit with mixer tap, roll top work surface, radiator and door to external.



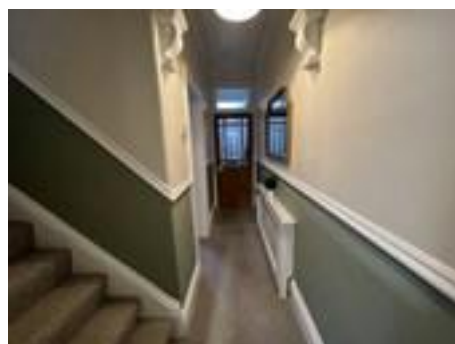
Bathroom W/C

2.23m x 2.05m (7'3" x 6'8")

Double glazed window to rear aspect, panelled bath with shower over, wash hand basin, low level w/c and radiator.



Stairs to First Floor



Bedroom One

4.43m x 3.12m (14'6" x 10'2")

Double glazed window to front aspect, coving, storage unit and radiator.



Bedroom Two

2.82m x 2.57m (9'3" x 8'5")

Double glazed window to rear aspect, coving and radiator.



Stairs to Third Bedroom

Bedroom Three

Double glazed window to front aspect, radiator and under eaves storage.



External

Court yard to the rear





Energy Efficiency Rating		Current	Potential
<i>Very energy efficient - lower running costs</i>			
(92-100) A			
(81-91) B			
(69-80) C			78
(55-68) D		60	
(39-54) E			
(21-38) F			
(1-20) G			
<i>Not energy efficient - higher running costs</i>			
England, Scotland & Wales		EU Directive 2002/91/EC	

Derwent Street, Hartlepool, Hartlepool, Durham, TS26 8BE

Contact your local branch today for more information on this property:

**19 West St. Marys Gate, Grimsby, Lincolnshire, DN31 1LE, Tel: 01472 311 113,
enquiries@jacksongreenpreston.co.uk, <https://www.jacksongreenpreston.co.uk/>**

These particulars, whilst believed to be accurate are set out as a general outline only for guidance and do not constitute any part of an offer or contract. Intending purchasers should not rely on them as statements of representation of fact, but must satisfy themselves by inspection or otherwise as to their accuracy. No person in this firm's employment has the authority to make or give any representation or warranty in respect of the property.



<https://www.jacksongreenpreston.co.uk/> - 01472 311 113