

3 bed terraced house to buy in

Ormskirk Road, Upholland, Skelmersdale,
Lancashire, WN8 0AR

£90,000 Starting Bid

x3 x1 x1

Tenure

Freehold

On Street parking

Property features

- ✓ Being Sold via Secure Sale Online Bidding, Terms & Conditions Apply
- ✓ Three Bedrooms
- ✓ Front and rear gardens
- ✓ Double garage
- ✓ EPC Rating D

Key Information

- ✓ Council Tax: Band A
- ✓ EPC Rating: D
- ✓ Heating supply: Gas

Description

Pattinson Auction are pleased to present this end terrace property for sale in Upholland. This property is perfect for investors or first-time buyers and offers plenty of opportunity to modernise to make the perfect family home.

Upon entering, you are greeted with the entrance hall with the main living area to the left, kitchen straight on and the stairs to the first floor to your right. The living room offers plenty of natural light with dual aspect windows to the front and rear garden and has a gas fire with mantle.

The kitchen is fitted with a range of wall and base units and has space for a freestanding oven and hob, side window and door to the rear garden. To the first floor you will find three bedrooms, two double and one single, a family bathroom with shower and sink and a separate toilet.

The property is accessed via a paved front garden which is gated, and a side gate offers access to the rear garden and double garage.

Set in a popular residential location, shops, doctors, restaurants, and transport links are just a short journey away.

Council Tax Band: A

Tenure: Freehold

Price: Starting Bid £90,000

Property Type: Terraced House

Parking: On Street

Heating: Gas

Bathroom

1.80m x 1.70m (5'10" x 5'6")

WC

Bedroom 3

2.60m x 2.50m (8'6" x 8'2")

Bedroom 2

2.80m x 2.70m (9'2" x 8'10")

Bedroom 1

3.60m x 2.50m (11'9" x 8'2")

Garage

6.40m x 5.20m (20'11" x 17'0")

Kitchen

3.45m x 2.80m (11'3" x 9'2")

Lounge

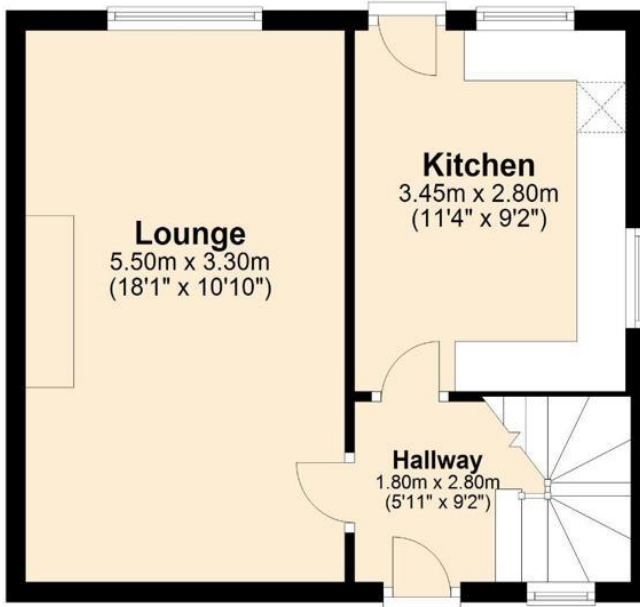
5.48m x 3.30m (17'11" x 10'9")

Entrance Hallway

2.80m x 1.80m (9'2" x 5'10")

Ground Floor

Approx. 33.7 sq. metres (362.5 sq. feet)




First Floor

Approx. 36.1 sq. metres (389.1 sq. feet)



Total area: approx. 69.8 sq. metres (751.6 sq. feet)

Energy Efficiency Rating		Current	Potential
<i>Very energy efficient - lower running costs</i>			
(92-100) A			
(81-91) B			82
(69-80) C			
(55-68) D		66	
(39-54) E			
(21-38) F			
(1-20) G			
<i>Not energy efficient - higher running costs</i>			
England, Scotland & Wales		EU Directive 2002/91/EC 	

Ormskirk Road, Upholland, Skelmersdale, Lancashire, WN8 0AR

Contact your local branch today for more information on this property:

**19 West St. Marys Gate, Grimsby, Lincolnshire, DN31 1LE, Tel: 01472 311 113,
enquiries@jacksongreenpreston.co.uk, <https://www.jacksongreenpreston.co.uk/>**

These particulars, whilst believed to be accurate are set out as a general outline only for guidance and do not constitute any part of an offer or contract. Intending purchasers should not rely on them as statements of representation of fact, but must satisfy themselves by inspection or otherwise as to their accuracy. No person in this firm's employment has the authority to make or give any representation or warranty in respect of the property.

