



2 bed maisonette to buy in TW2

Warren Road, Twickenham, ., TW2 7DL

£240,000 Starting Bid

 x2  x1  x1

Tenure

Leasehold

On Street parking

Property features

- ✓ Being Sold via Secure Sale online bidding. Terms & Conditions apply.
- ✓ First Floor Maisonette
- ✓ Two Double Bedrooms
- ✓ Private Rear Garden
- ✓ EPC Rating E

Key Information

- ✓ Council Tax: Band C
- ✓ EPC Rating: E
- ✓ Heating supply: Electric

Description

A first floor maisonette within the borough of Richmond Upon Thames with a private garden.

With a living room, kitchen, two bedrooms and a shower room, requiring full internal updating.

Warren Road is located within walking distance of both Twickenham train station and Whitton aswell as the high street, with a variety of shops and restaurants and some popular schools are close by including Chase Bridge Primary School. Plus easy access to the A316 connecting to the M3/M25 and into central London.

Heathfield Recreation Park, Murray Park and Crane Park with pleasant walks along the River Crane are also nearby.

Council Tax Band: C

Tenure: Leasehold

Length of Lease: 55

Annual Ground Rent Amount: £6.00

Price: Starting Bid £240,000

Property Type: Maisonette

Parking: On Street

Heating: Electric

Warren Road TW2

Approx. Gross Internal Floor Area
51.2 Sq M - 551 Sq Ft

ChaseBuchanan

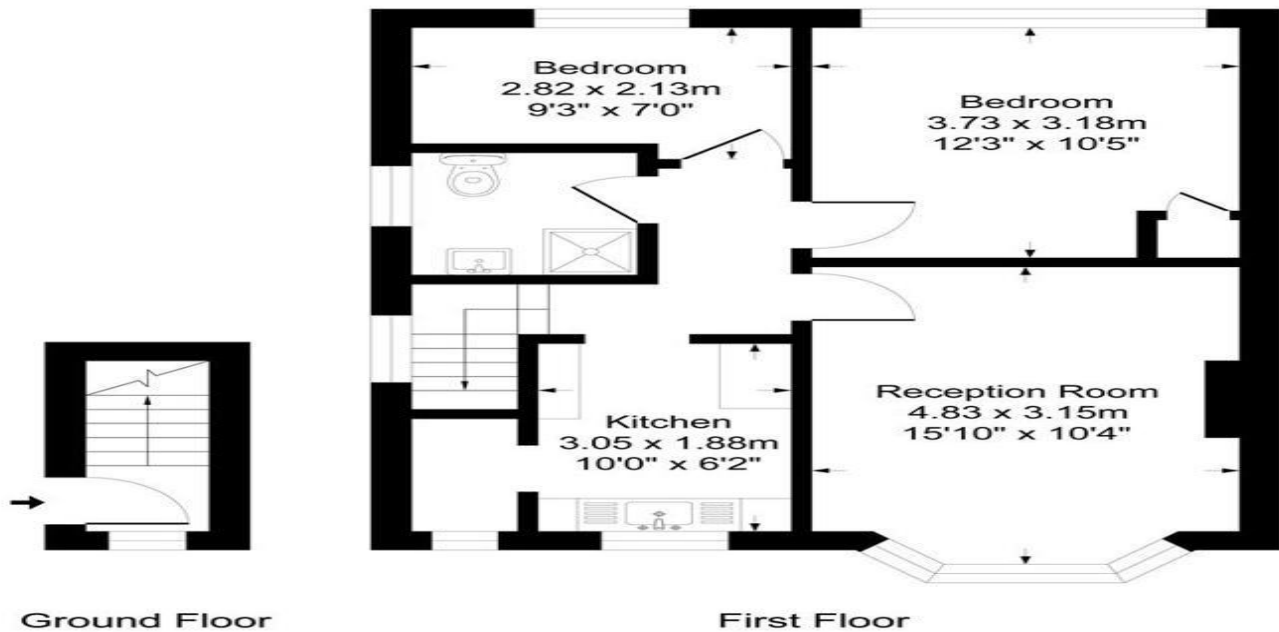


Illustration for identification purposes only, measurements are approximate, not to scale.

Energy Efficiency Rating		
	Current	Potential
<i>Very energy efficient - lower running costs</i>		
(92-100) A		
(81-91) B		
(69-80) C		
(55-68) D		65
(39-54) E	46	
(21-38) F		
(1-20) G		
<i>Not energy efficient - higher running costs</i>		
England, Scotland & Wales	EU Directive 2002/91/EC	

Warren Road, Twickenham, ., TW2 7DL

Contact your local branch today for more information on this property:

**19 West St. Marys Gate, Grimsby, Lincolnshire, DN31 1LE, Tel: 01472 311 113,
enquiries@jacksongreenpreston.co.uk, <https://www.jacksongreenpreston.co.uk/>**

These particulars, whilst believed to be accurate are set out as a general outline only for guidance and do not constitute any part of an offer or contract. Intending purchasers should not rely on them as statements of representation of fact, but must satisfy themselves by inspection or otherwise as to their accuracy. No person in this firms employment has the authority to make or give any representation or warranty in respect of the property.

