



## 4 bed semi-detached house to buy in NE23

Barras Avenue, Annitsford, Cramlington, Tyne and Wear, NE23 7QX

# £234,950

🏠 x4 🚗 x2 🚲 x2

Tenure

**Freehold**

## Property features

- ✓ Immaculate home
- ✓ En suite to master bedroom
- ✓ Orangery
- ✓ Stunning garden
- ✓ EPC Rating C

Driveway & Garage parking

## Key Information

- ✓ Council Tax: Band A
- ✓ EPC Rating: C
- ✓ Heating supply: Gas

## Description

Beautifully presented four bedroom home! This lovely property has been extended and remodelled by the current owners to a high standard and offers some fantastic features. There is a superb orangery to the rear which really makes the most of the lovely garden. Westerly facing and offering a private aspect the garden benefits from mature planting and a elevated decking area... a lovely space to relax.

The accommodation includes entrance porch, hallway, living room with bay window and multi fuel burner, generous kitchen/diner which opens to a beautiful orangery overlooking the garden. There is internal access to the garage also. The first floor provides four bedrooms, the master with en suite and a fabulous bathroom with bath and separate walk in shower enclosure.

This is an amazing opportunity for a buyer to purchase a real one off home.

Council Tax Band: A

Tenure: Freehold

Price: £234,950

Property Type: Semi-detached house

Parking: Driveway & Garage

Heating: Gas

## Entrance porch



## Hallway



## Living Room



## Kitchen/dining



## Orangery



## Landing

## Bedroom 1



## En suite



## Bedroom 2



## Bedroom 3



## Outlook



## Bedroom 4



---

## Bathroom

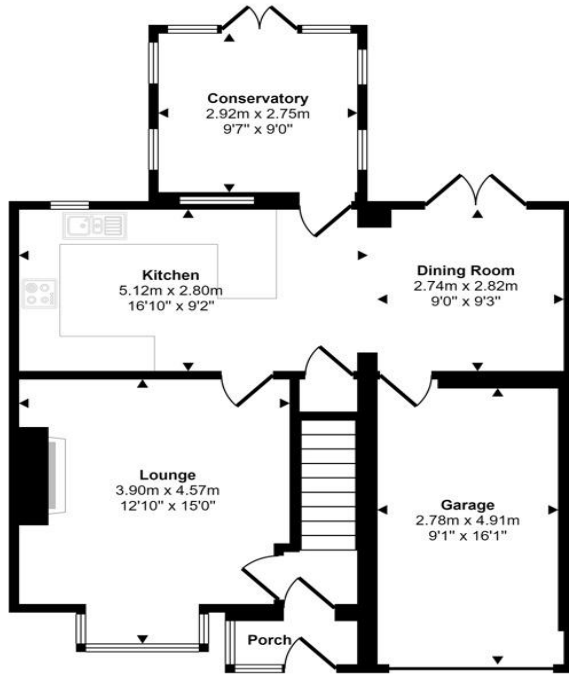


---

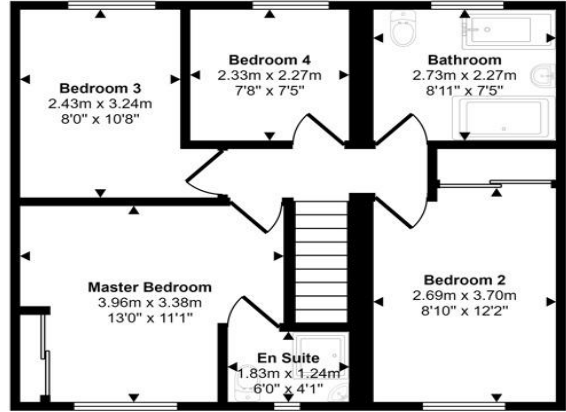
## External



Approx Gross Internal Area  
125 sq m / 1342 sq ft



Ground Floor  
Approx 70 sq m / 759 sq ft



First Floor  
Approx 54 sq m / 583 sq ft

This floorplan is only for illustrative purposes and is not to scale. Measurements of rooms, doors, windows, and any items are approximate and no responsibility is taken for any error, omission or mis-statement. Icons of items such as bathroom suites are representations only and may not look like the real items. Made with Made Snappy 360.

Energy Efficiency Rating		
	Current	Potential
<i>Very energy efficient - lower running costs</i>		
(92-100) <b>A</b>		
(81-91) <b>B</b>		85
(69-80) <b>C</b>	73	
(55-68) <b>D</b>		
(39-54) <b>E</b>		
(21-38) <b>F</b>		
(1-20) <b>G</b>		
<i>Not energy efficient - higher running costs</i>		
<b>England, Scotland &amp; Wales</b>	EU Directive 2002/91/EC	

Barras Avenue, Annitsford, Cramlington, Tyne and Wear, NE23 7QX

Contact your local branch today for more information on this property:

**19 West St. Marys Gate, Grimsby, Lincolnshire, DN31 1LE, Tel: 01472 311 113,  
enquiries@jacksongreenpreston.co.uk, <https://www.jacksongreenpreston.co.uk/>**

These particulars, whilst believed to be accurate are set out as a general outline only for guidance and do not constitute any part of an offer or contract. Intending purchasers should not rely on them as statements of representation of fact, but must satisfy themselves by inspection or otherwise as to their accuracy. No person in this firm's employment has the authority to make or give any representation or warranty in respect of the property.



<https://www.jacksongreenpreston.co.uk/> - 01472 311 113