



## 1 bed apartment to buy in SL1

Juniper Court, Nixey Close, Slough, Slough,  
SL1 1NU

**£80,000** Starting Bid

 x1  x1  x1

Tenure

**Leasehold**

Allocated parking

## Property features

- ✓ Being Sold via Secure Sale online bidding. Terms and Conditions
- ✓ Ground Floor
- ✓ Retirement Property
- ✓ Modern kitchen
- ✓ EPC Rating D

## Key Information

- ✓ Council Tax: Band B
- ✓ EPC Rating: D
- ✓ Heating supply: Electric
- ✓ Electric supply: National Grid
- ✓ Water supply: Direct mains water
- ✓ Broadband: FTTC (fibre to the cabinet)
- ✓ Mobile signal: Good

## Description

Presenting a one bed retirement property located in Slough with no onward chain complications. Property is ground floor with modern kitchen, one double bedroom one bathroom. within a mile to shopping and transport facilities. Viewings highly recommended.

For sale through Pattinson Auction under Conditional Terms

For sale through Pattinson Auction under Conditional Terms.

Council Tax Band: B

Tenure: Leasehold

Length of Lease: 64

Annual Ground Rent Amount: £1,546.00

Annual Service Charge Amount: £2,651.00

Price: Starting Bid £80,000

Property Type: Apartment

Parking: Allocated

Construction materials: Brick and block

Roofing type: Flat

Heating: Electric

Electric: National Grid

Water: Direct mains water

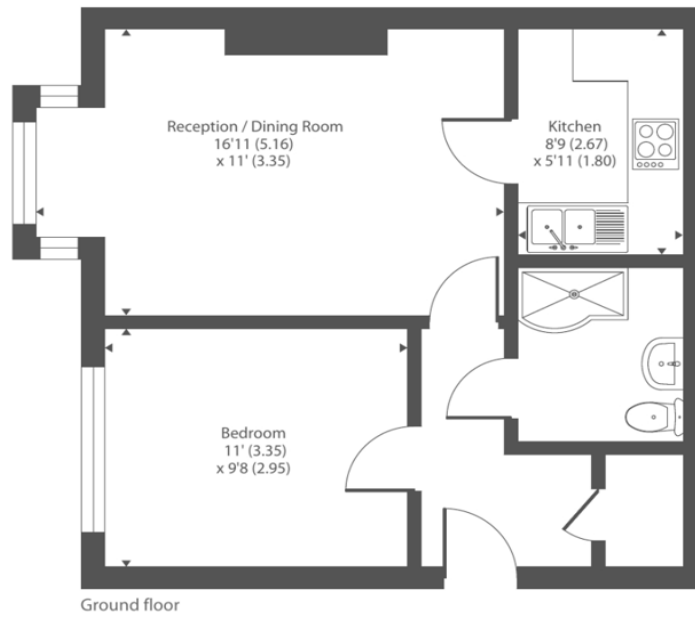
Water meter: No

Sewerage: Standard UK domestic

Air conditioning: No

Broadband: FTTC (fibre to the cabinet)

Mobile signal coverage: Good



Floor plan produced in accordance with RICS Property Measurement Standards incorporating International Property Measurement Standards (IPMS2 Residential). © rnhcom 2024. Produced for Chancellors Estate Agents. REF: 1122178

Energy Efficiency Rating		
	Current	Potential
<i>Very energy efficient - lower running costs</i>		
(92-100) <b>A</b>		
(81-91) <b>B</b>		
(69-80) <b>C</b>		79
(55-68) <b>D</b>	61	
(39-54) <b>E</b>		
(21-38) <b>F</b>		
(1-20) <b>G</b>		
<i>Not energy efficient - higher running costs</i>		
<b>England, Scotland &amp; Wales</b>		EU Directive 2002/91/EC

Juniper Court, Nixey Close, Slough, Slough, SL1 1NU

Contact your local branch today for more information on this property:

**19 West St. Marys Gate, Grimsby, Lincolnshire, DN31 1LE, Tel: 01472 311 113,  
enquiries@jacksongreenpreston.co.uk, <https://www.jacksongreenpreston.co.uk/>**

These particulars, whilst believed to be accurate are set out as a general outline only for guidance and do not constitute any part of an offer or contract. Intending purchasers should not rely on them as statements of representation of fact, but must satisfy themselves by inspection or otherwise as to their accuracy. No person in this firms employment has the authority to make or give any representation or warranty in respect of the property.

