



2 bed terraced house to buy in

Enfield Road, Blackpool, Blackpool,
Lancashire, FY1 2RB

£45,000 Starting Bid

 x2  x1  x1

Tenure

Freehold

On Street parking

Property features

- ✓ Being Sold via Secure Sale online bidding. Terms and Conditions
- ✓ Terraced Property
- ✓ Two Bedrooms
- ✓ One Reception Room
- ✓ EPC Rating C

Key Information

- ✓ Council Tax: Band A
- ✓ EPC Rating: C
- ✓ Heating supply: Gas
- ✓ Electric supply: National Grid
- ✓ Water supply: Direct mains water
- ✓ Broadband: FTTP (fibre to the premises)
- ✓ Mobile signal: Good

Description

This 2 bedroom terraced house presents a rare opportunity for both investors and first-time buyers alike.

Situated close to town centre, this property boasts no onward chain, offering a hassle-free purchase.

The home features UPVC double glazing throughout, providing enhanced energy efficiency.

With a lounge, kitchen, and utility room on the ground floor, the potential for development is vast. Upstairs, two generously sized bedrooms accompany a bathroom complete with a walk-in shower, catering to both comfort and convenience.

With a rear yard.

Embrace the opportunity to transform this property into your dream home, utilising the blank canvas of the exterior to create a peaceful sanctuary to call your own.

Don't miss out on this fantastic chance to experience the perfect fusion of comfort and potential within this inviting terraced house.

Council Tax Band: A

Tenure: Freehold

Price: Starting Bid £45,000

Property Type: Terraced House

Parking: On Street

Year built: 1970

Construction materials: Brick and block

Roofing type: Slate tiles

Risk of floods and or erosion: No

Flooded in last 5 years: No

Flood defences: No

Planning permissions or proposals for development: No

Coalfield or mining area: No

Listed property: No

Conservation area: No

Public rights of way: No

Adaptions for accessibility: No

Restrictions: No

Required access: No

Heating: Gas

Electric: National Grid

Water: Direct mains water

Water meter: No

Sewerage: Standard UK domestic

Air conditioning: No

Broadband: FTTP (fibre to the premises)

Mobile signal coverage: Good

Vestibule

Vestibule

1.17m x 0.91m

Hallway

Hallway

3.51m x 0.9m

Lounge

Lounge

3.74m x 3.23m

Kitchen

Kitchen

3.04m x 4.21m

Utility Room

Utility Room

4.41m x 1.89m

Landing

Landing

0.68m x 2.72m

Bedroom 1

Bedroom 1

3.79m x 4.28m

Bedroom 2

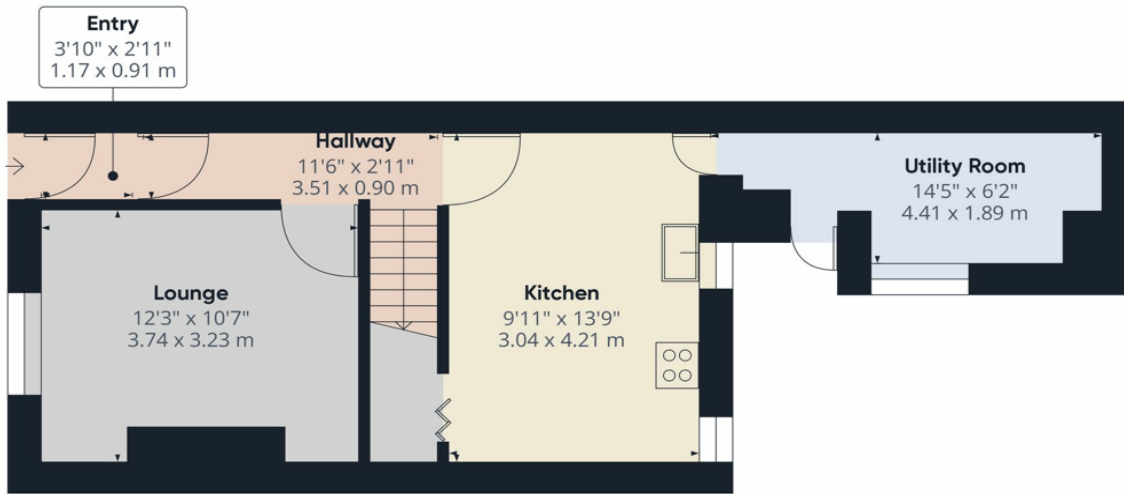
Bedroom 2

2.3m x 2.75m

Bathroom

Bathroom

3.05m x 1.46m



Approximate total area⁽¹⁾
413.93 ft²
38.46 m²

(1) Excluding balconies and terraces

While every attempt has been made to ensure accuracy, all measurements are approximate, not to scale. This floor plan is for illustrative purposes only.

GIRAFFE 360

Floor 1

Energy Efficiency Rating		
	Current	Potential
<i>Very energy efficient - lower running costs</i>		
(92-100) A		
(81-91) B		88
(69-80) C	74	
(55-68) D		
(39-54) E		
(21-38) F		
(1-20) G		
<i>Not energy efficient - higher running costs</i>		
England, Scotland & Wales	EU Directive 2002/91/EC	

Enfield Road, Blackpool, Blackpool, Lancashire, FY1 2RB

Contact your local branch today for more information on this property:

19 West St. Marys Gate, Grimsby, Lincolnshire, DN31 1LE, Tel: 01472 311 113, enquiries@jacksongreenpreston.co.uk, https://www.jacksongreenpreston.co.uk/

These particulars, whilst believed to be accurate are set out as a general outline only for guidance and do not constitute any part of an offer or contract. Intending purchasers should not rely on them as statements of representation of fact, but must satisfy themselves by inspection or otherwise as to their accuracy. No person in this firms employment has the authority to make or give any representation or warranty in respect of the property.

