



## 4 bed detached house to buy in

Lower House Green, Lumb, Rossendale,  
Lancashire, BB4 9UH

**£275,000** Starting Bid

🏠 x4 🚗 x2 🚲 x1

Tenure

**Leasehold**

Garage parking

## Property features

- ✓ Being Sold via Secure Sale online bidding. Terms and Conditions
- ✓ Detached Property
- ✓ Four Bedrooms
- ✓ Generous Lounge
- ✓ EPC Rating C

## Key Information

- ✓ Council Tax: Band D
- ✓ EPC Rating: C
- ✓ Heating supply: Gas
- ✓ Electric supply: National Grid
- ✓ Water supply: Direct mains water
- ✓ Broadband: ADSL copper wire
- ✓ Mobile signal: Good

## Description

Discover the potential of this three-story, four-bedroom detached family home located in the charming village of Water. With a blend of spacious living and a tranquil setting, this property is perfect for families looking to create their dream home. Although it requires some basic upgrading throughout, it offers a fantastic opportunity to personalize and enhance its features.

### Accommodation Overview:

Upon entering the ground floor, you'll find a welcoming entrance hallway that leads into a generous lounge, ideal for family gatherings and relaxing evenings. The large dining kitchen provides ample space for culinary adventures and entertaining guests, seamlessly connecting to a bright conservatory that invites the outdoors in.

On the first floor, you will discover four well-proportioned bedrooms, including a principal suite complete with an ensuite shower room for added privacy and convenience. A family bathroom on this level serves the additional bedrooms, ensuring comfort for all family members.

The lower level boasts a large garage storeroom, perfect for additional storage needs, along with a convenient WC.

### External Features:

The property benefits from driveway parking to the front, ensuring ease of access. To the rear, an enclosed garden offers a peaceful retreat, backing onto serene open farmland, providing a picturesque backdrop for outdoor activities and relaxation.

With its prime location in Water, this detached family home is an ideal canvas for those looking to invest in a property with great potential. Don't miss out on the chance to transform this home into a personal sanctuary.

Council Tax Band: D

Tenure: Leasehold

Length of Lease: 966

Annual Ground Rent Amount: £35.00

Price: Starting Bid £275,000

Property Type: Detached House

Parking: Garage, Off Street

Year built: 1991

Construction materials: Brick and block, Stone built

Risk of floods and or erosion: No

Flooded in last 5 years: No

Flood defences: No

Planning permissions or proposals for development: No

Coalfield or mining area: No

Listed property: No

Conservation area: No

Public rights of way: No

Adaptions for accessibility: No

Restrictions: No

Required access: No

Heating: Gas

Electric: National Grid

Water: Direct mains water

Water meter: Yes

Sewerage: Standard UK domestic

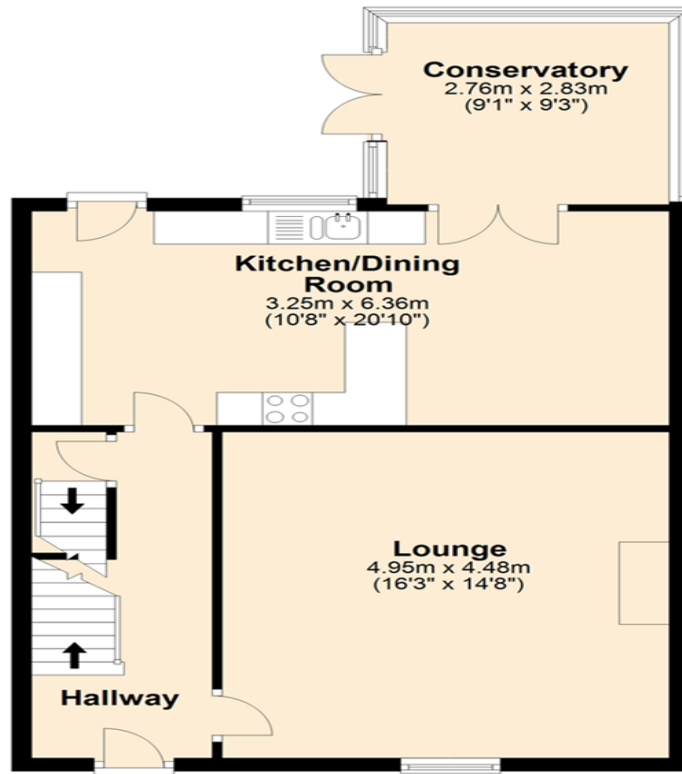
Air conditioning: No

Broadband: ADSL copper wire

Mobile signal coverage: Good

## Ground Floor

Approx. 61.0 sq. metres (657.0 sq. feet)



Energy Efficiency Rating		Current	Potential
<i>Very energy efficient - lower running costs</i>			
(92-100) <b>A</b>			
(81-91) <b>B</b>			
(69-80) <b>C</b>		71	79
(55-68) <b>D</b>			
(39-54) <b>E</b>			
(21-38) <b>F</b>			
(1-20) <b>G</b>			
<i>Not energy efficient - higher running costs</i>			
<b>England, Scotland &amp; Wales</b>		EU Directive 2002/91/EC	

Lower House Green, Lumb, Rossendale, Lancashire, BB4 9UH

Contact your local branch today for more information on this property:

**19 West St. Marys Gate, Grimsby, Lincolnshire, DN31 1LE, Tel: 01472 311 113,  
enquiries@jacksongreenpreston.co.uk, <https://www.jacksongreenpreston.co.uk/>**

These particulars, whilst believed to be accurate are set out as a general outline only for guidance and do not constitute any part of an offer or contract. Intending purchasers should not rely on them as statements of representation of fact, but must satisfy themselves by inspection or otherwise as to their accuracy. No person in this firm's employment has the authority to make or give any representation or warranty in respect of the property.

