



3 bed terraced house to buy in

Kingsway, St. George, Bristol, Somerset,
BS5 8NQ

£240,000 Starting Bid

 x3  x1  x2

Tenure

Freehold

Rear parking

Property features

- ✓ Being Sold via Secure Sale Online Bidding T&C's Apply
- ✓ Mid Terrace House
- ✓ Three Bedrooms
- ✓ Good Size Garden
- ✓ EPC Rating C

Key Information

- ✓ Council Tax: Band C
- ✓ EPC Rating: C
- ✓ Heating supply: Gas
- ✓ Electric supply: National Grid
- ✓ Water supply: Direct mains water
- ✓ Broadband: FTTP (fibre to the premises)
- ✓ Mobile signal: Good

Description

This three-bedroom house offers excellent potential, a large garden and rare rear access — an exciting opportunity for buyers looking for a project to make their own.

The accommodation begins with an entrance hall, ideal for coats and shoes, opening into the main hallway with useful storage under the stairs. To the front is a sitting room with a bay window, while to the rear, there is a kitchen with access to the garden and a separate dining room alongside — a layout that lends itself well to being opened up into a more modern space.

Upstairs there are three bedrooms, including two generous doubles and a single, along with a family bathroom. The property retains some charming original features that could be restored, while also offering excellent potential for modernisation. The property benefits from double glazing, and the vendor advises that a combination boiler was fitted around three years ago, with the roof re-felted, re-battened and re-tiled in 2021.

Externally, there is a walled front garden. The rear garden is south-easterly facing, a generous size, and benefits from lane access, offering the potential to create off-street parking while still retaining plenty of outdoor space. There was originally a garage to the rear, and many neighbouring properties have off-street parking or garages along the same road.

This property represents a superb opportunity for refurbishment and investment.

Council Tax Band: C

Tenure: Freehold

Price: Starting Bid £240,000

Property Type: Terraced House

Parking: Rear

Construction materials: Brick and block

Roofing type: Clay tiles

Risk of floods and or erosion: No

Flooded in last 5 years: No

Flood defences: No

Planning permissions or proposals for development: No

Coalfield or mining area: No

Listed property: No

Conservation area: No

Public rights of way: No

Adaptions for accessibility: No

Restrictions: No

Required access: No

Heating: Gas

Electric: National Grid

Water: Direct mains water

Water meter: No

Sewerage: Standard UK domestic

Air conditioning: No

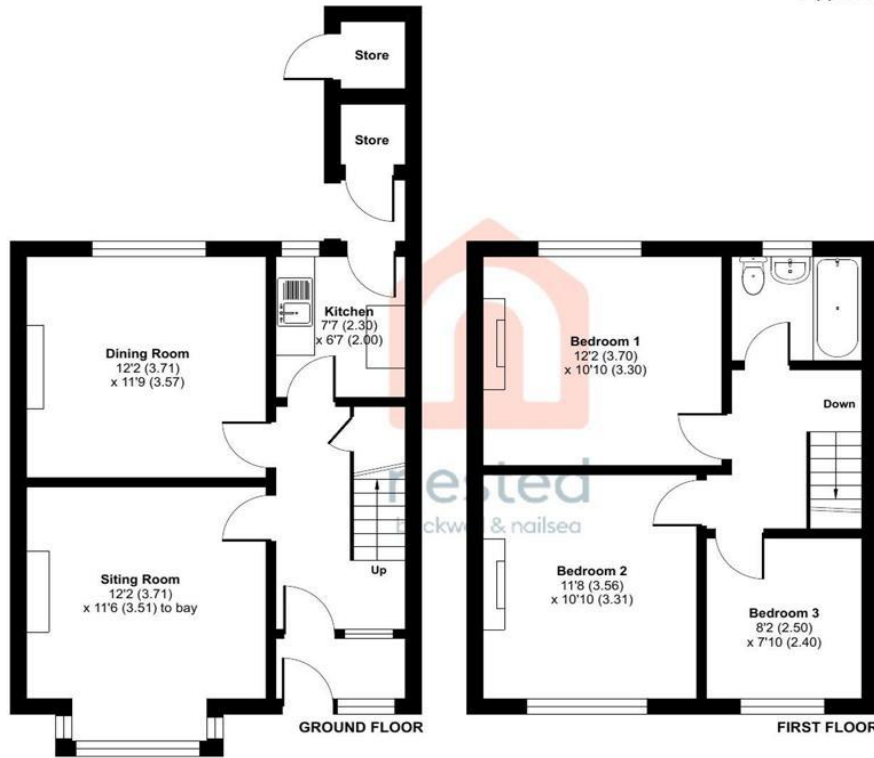
Broadband: FTTP (fibre to the premises)

Mobile signal coverage: Good



Kingsway, St. George, Bristol, BS5

Approximate Area = 927 sq ft / 86.1 sq m
 Stores = 26 sq ft / 2.4 sq m
 Total = 953 sq ft / 88.5 sq m
 For identification only - Not to scale



Floor plan produced in accordance with RICS Property Measurement 2nd Edition, Incorporating International Property Measurement Standards (IPMS2 Residential). © nrichcom 2025. Produced for Simon Russell & Co Ltd (Nested), REF: 1317484

Energy Efficiency Rating		Current	Potential
Very energy efficient - lower running costs			
(92-100) A			
(81-91) B			
(69-80) C			
(55-68) D		70	80
(39-54) E			
(21-38) F			
(1-20) G			
Not energy efficient - higher running costs			
England, Scotland & Wales		EU Directive 2002/91/EC	

Kingsway, St. George, Bristol, Somerset, BS5 8NQ

Contact your local branch today for more information on this property:

19 West St. Marys Gate, Grimsby, Lincolnshire, DN31 1LE, Tel: 01472 311 113, enquiries@jacksongreenpreston.co.uk, https://www.jacksongreenpreston.co.uk/

These particulars, whilst believed to be accurate are set out as a general outline only for guidance and do not constitute any part of an offer or contract. Intending purchasers should not rely on them as statements of representation of fact, but must satisfy themselves by inspection or otherwise as to their accuracy. No person in this firms employment has the authority to make or give any representation or warranty in respect of the property.



<https://www.jacksongreenpreston.co.uk/> - 01472 311 113