



To buy

### 3 bed detached house to buy in

Station Road, West Rainton, Houghton Le Spring, Durham, DH4 6SF

# £144,500

🏠 x3 🚗 x1 🚻 x1

Tenure

**Freehold**

Garage parking

### Property features

- ✓ No Chain
- ✓ 3 Bedrooms
- ✓ Detached
- ✓ EPC Rating D

## Key Information

- ✓ Council Tax: Band B
- ✓ EPC Rating: D
- ✓ Heating supply: Gas

## Description

Pattinson Estate Agents are pleased to bring to the market this double fronted detached house, located in West Rainton.

Priced to sell, the property offers spacious accommodation throughout, and has been recently modernised with a new kitchen, flooring and roof. Downstairs, there are two huge living rooms both with feature electric fireplaces, and to the back of the property there is a newly renovated kitchen with integrated oven and hob. There is a further room opening out onto the rear garden through patio doors, and a garage with internal door.

Upstairs there are three bedrooms, all of which benefit from new carpets. The main bathroom is a four-piece suite with WC, hand basin, bath and shower. The landing has a ceiling rose and decorative cornice.

The property is conveniently located on a great transport link to both Durham and Sunderland via the A690, which also has close links to the A1 motorway. West Rainton itself also offers local amenities, including shops, pharmacy, gym, post office and more. There is also a beautiful nature reserve, Rainton Meadows, within close proximity.

Contact our Durham branch to book in your viewing and register your interest as soon as possible.

Council Tax Band: B

Tenure: Freehold

Price: £144,500

Property Type: Detached House

Parking: Garage, On Street

Heating: Gas

## External



## Lounge

3.87m x 4.56m (12'8" x 14'11")

Large living room also to the front of the property with under-stairs storage cupboard, electric fireplace and doors into the kitchen.



## Kitchen

3.65m x 2.69m (11'11" x 8'9")

Recently fitted, the modern style kitchen is at the back of the property and has an integrated double oven and hob, along with space for a fridge and freezer.



## Reception Room

2.52m x 3.90m (8'3" x 12'9")

Large room located at the back of the property with access into the garage and french doors into the garden



## Bedroom 1

3.13m x 4.29m (10'3" x 14'0")

Large double bedroom located at the front of the house, with double glazed window to the front aspect



## Bedroom 2

2.41m x 3.23m (7'10" x 10'7")

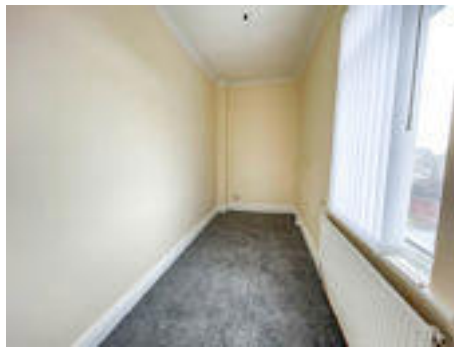
Also situated at the front of the property, with storage cupboard and double glazed window to the front elevation



## Bedroom 3

4.15m x 1.64m (13'7" x 5'4")

Located at the back of the property, with double glazed window overlooking the garden



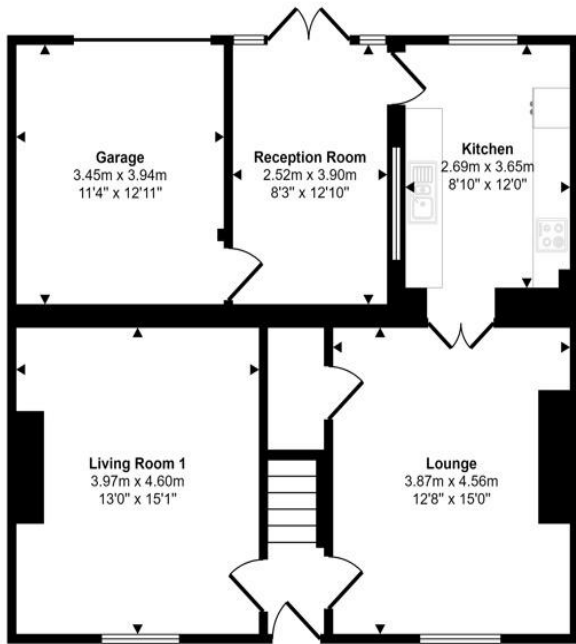
## Bathroom

2.96m x 1.52m (9'8" x 4'11")

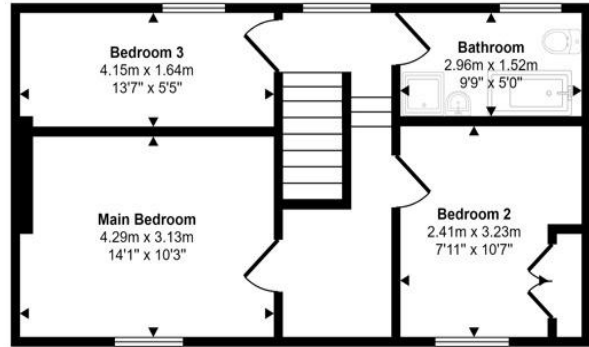
Situated at the back of the property, with a large frosted glass window, four piece suite: WC, hand basin, bath and shower



Approx Gross Internal Area  
125 sq m / 1348 sq ft



Ground Floor  
Approx 81 sq m / 868 sq ft



First Floor  
Approx 45 sq m / 480 sq ft

This floorplan is only for illustrative purposes and is not to scale. Measurements of rooms, doors, windows, and any items are approximate and no responsibility is taken for any error, omission or mis-statement. Icons of items such as bathroom suites are representations only and may not look like the real items. Made with Made Snappy 360.

Energy Efficiency Rating		Current	Potential
<i>Very energy efficient - lower running costs</i>			
(92-100) <b>A</b>			
(81-91) <b>B</b>			
(69-80) <b>C</b>			74
(55-68) <b>D</b>		63	
(39-54) <b>E</b>			
(21-38) <b>F</b>			
(1-20) <b>G</b>			
<i>Not energy efficient - higher running costs</i>			
<b>England, Scotland &amp; Wales</b>		EU Directive 2002/91/EC	

Station Road, West Rainton, Houghton Le Spring, Durham, DH4 6SF

Contact your local branch today for more information on this property:

**19 West St. Marys Gate, Grimsby, Lincolnshire, DN31 1LE, Tel: 01472 311 113,  
enquiries@jacksongreenpreston.co.uk, <https://www.jacksongreenpreston.co.uk/>**

These particulars, whilst believed to be accurate are set out as a general outline only for guidance and do not constitute any part of an offer or contract. Intending purchasers should not rely on them as statements of representation of fact, but must satisfy themselves by inspection or otherwise as to their accuracy. No person in this firms employment has the authority to make or give any representation or warranty in respect of the property.

