



3 bed semi-detached house to buy in TS5

The Oval, Acklam, Middlesbrough, North Yorkshire, TS5 8EU

£230,000

🏠 x3 🚗 x1 🚗 x2

Tenure

Freehold

Property features

- ✓ Popular Acklam Location
- ✓ Driveway Large Enough For Multiple Vehicle Parking
- ✓ Detached Garage
- ✓ Rear Garden with Patio Area
- ✓ EPC Rating E

Off Street parking

Key Information

- ✓ Council Tax: Band C
- ✓ EPC Rating: E
- ✓ Heating supply: Gas

Description

*****3 Bedroom Semi-Detached Property*****

Situated in the highly sought-after residential area of Acklam, this well-presented three bedroom semi-detached property on The Oval offers spacious and versatile accommodation, ideal for families and professionals alike.

The ground floor briefly comprises a welcoming entrance hallway leading to a bright and comfortable lounge, a separate dining room perfect for entertaining, and a fitted kitchen with ample storage and worktop space. A convenient downstairs WC completes the ground floor accommodation. To the first floor are three well-proportioned bedrooms, all offering excellent natural light, alongside a family bathroom fitted with a modern suite.

Externally, the property boasts a generous driveway providing off-street parking for multiple vehicles, leading to a detached garage offering additional storage or parking. To the rear is a garden featuring a patio area, ideal for outdoor dining and relaxation.

Located within reach to well-regarded schools, local amenities, and transport links, this property combines a desirable location with practical living space.

For more information and to arrange an internal inspection contact the Stockton branch today.

Council Tax Band: C

Tenure: Freehold

Price: £230,000

Property Type: Semi-detached house

Parking: Off Street

Heating: Gas

Entrance



Hallway



Lounge

3.97m x 3.94m (13'0" x 12'11")



Dining Room

6.53m x 3.24m (21'5" x 10'7")



Kitchen

6.14m x 2.48m (20'1" x 8'1")



WC



Bedroom 1

4.09m x 3.27m (13'5" x 10'8")



Bedroom 2

3.60m x 3.55m (11'9" x 11'7")



Bedroom 3

2.58m x 2.46m (8'5" x 8'0")



Family Bathroom

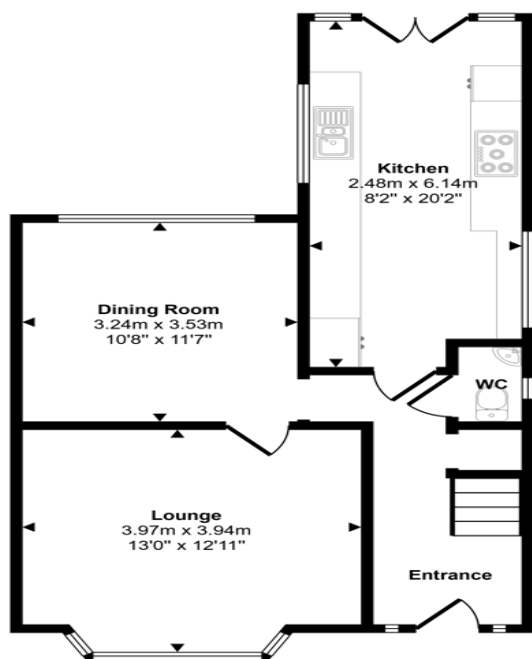
2.25m x 1.88m (7'4" x 6'2")



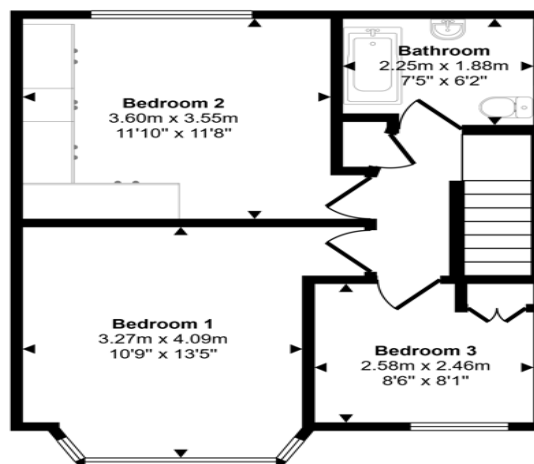
External



Approx Gross Internal Area
97 sq m / 1040 sq ft



Ground Floor
Approx 52 sq m / 560 sq ft



First Floor
Approx 45 sq m / 480 sq ft

This floorplan is only for illustrative purposes and is not to scale. Measurements of rooms, doors, windows, and any items are approximate and no responsibility is taken for any error, omission or mis-statement. Icons of items such as bathroom suites are representations only and may not look like the real items. Made with Made Snappy 360.

Energy Efficiency Rating		Current	Potential
Very energy efficient - lower running costs			
(92-100) A			
(81-91) B			
(69-80) C			69
(55-68) D		52	
(39-54) E			
(21-38) F			
(1-20) G			
Not energy efficient - higher running costs			
England, Scotland & Wales		EU Directive 2002/91/EC	

The Oval, Acklam, Middlesbrough, North Yorkshire, TS5 8EU

Contact your local branch today for more information on this property:

**19 West St. Marys Gate, Grimsby, Lincolnshire, DN31 1LE, Tel: 01472 311 113,
enquiries@jacksongreenpreston.co.uk, <https://www.jacksongreenpreston.co.uk/>**

These particulars, whilst believed to be accurate are set out as a general outline only for guidance and do not constitute any part of an offer or contract. Intending purchasers should not rely on them as statements of representation of fact, but must satisfy themselves by inspection or otherwise as to their accuracy. No person in this firm's employment has the authority to make or give any representation or warranty in respect of the property.

