



3 bed semi-detached house to buy in DH6

Luke Terrace, Wheatley Hill, Durham,
Durham, DH6 3RX

£130,000

🏠 x3 🚗 x1 🚻 x1

Tenure

Size

Freehold

764 sq ft / 71 sq m

Property features

- ✓ Turn Key Ready
- ✓ Modern three-bedroom semi-detached home
- ✓ Open-plan kitchen and dining area
- ✓ Cloakroom/WC
- ✓ EPC Rating C

Driveway parking

Garden

Key Information

- ✓ Council Tax: Band B
- ✓ EPC Rating: C
- ✓ Heating supply: Gas
- ✓ Electric supply: National Grid
- ✓ Water supply: Direct mains water

Description

Three-Bedroom Semi-Detached Home - TURN KEY READY - SOUTH WEST GARDEN - CLOAKS/W.C - LARGER DRIVEWAY

This beautifully presented modern three-bedroom semi-detached home is situated within a highly sought-after development in Wheatley Hill, offering stylish and comfortable living ideal for families, first-time buyers, and investors alike.

Designed with modern lifestyles in mind, the ground floor features a bright and welcoming lounge, creating a warm and inviting atmosphere. To the front, a stylish open-plan kitchen and dining area provides the perfect space for everyday family life and entertaining guests. A convenient ground floor cloakroom/WC further enhances the practicality of the layout.

Upstairs, the property offers three well-proportioned bedrooms, including two comfortable doubles, all filled with natural light. A contemporary family bathroom with shower over bath completes the first-floor accommodation.

Externally, the home benefits from a neat, low-maintenance front garden that enhances its kerb appeal. To the side, a generous driveway provides off-road parking for up to three vehicles. The enclosed south-westerly facing rear garden is a particular highlight, offering an excellent outdoor space ideal for relaxing, children's play, or summer entertaining.

The property further benefits from gas central heating, uPVC double glazing, and an impressive EPC rating of B, ensuring energy efficiency and comfort throughout.

Wheatley Hill is a popular and well-connected village offering a range of local shops and primary schools, along with convenient access to Durham City and the A19, making it ideal for commuters while still enjoying pleasant countryside surroundings.

This superb freehold home effortlessly combines style, practicality, and location. Early viewing is highly recommended to fully appreciate everything this property has to offer.

Council Tax Band: B

Tenure: Freehold

Price: £130,000

Property Type: Semi-detached house

Build Size: 71 sq m

USPs: Garden

Parking: Driveway

Heating: Gas

Electric: National Grid

Water: Direct mains water

Sewerage: Standard UK domestic

External Front

Entrance Hall



Kitchen



Dining Area



Lounge



Downstairs W/c



FIRST FLOOR:

Landing



Bedroom One



Bedroom Two



Bedroom Three



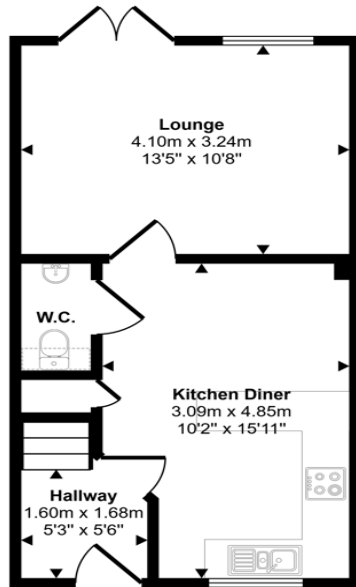
Family Bathroom



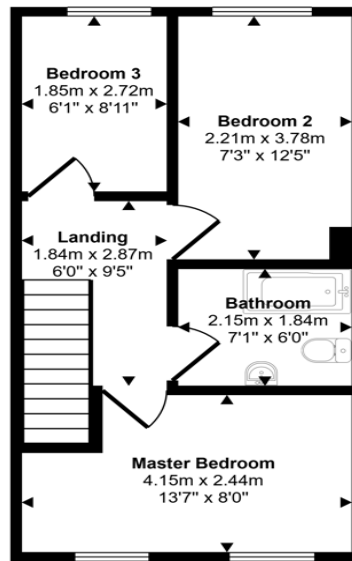
External Rear



Approx Gross Internal Area
69 sq m / 742 sq ft



Ground Floor
Approx 34 sq m / 367 sq ft



First Floor
Approx 35 sq m / 375 sq ft

Denotes head height below 1.5m

This floorplan is only for illustrative purposes and is not to scale. Measurements of rooms, doors, windows, and any items are approximate and no responsibility is taken for any error, omission or mis-statement. Icons of items such as bathroom suites are representations only and may not look like the real items. Made with Made Snappy 360.

Energy Efficiency Rating		
	Current	Potential
<i>Very energy efficient - lower running costs</i>		
(92-100) A		
(81-91) B		84
(69-80) C	79	
(55-68) D		
(39-54) E		
(21-38) F		
(1-20) G		
<i>Not energy efficient - higher running costs</i>		
England, Scotland & Wales	EU Directive 2002/91/EC	

Luke Terrace, Wheatley Hill, Durham, Durham, DH6 3RX

Contact your local branch today for more information on this property:

**19 West St. Marys Gate, Grimsby, Lincolnshire, DN31 1LE, Tel: 01472 311 113,
enquiries@jacksongreenpreston.co.uk, <https://www.jacksongreenpreston.co.uk/>**

These particulars, whilst believed to be accurate are set out as a general outline only for guidance and do not constitute any part of an offer or contract. Intending purchasers should not rely on them as statements of representation of fact, but must satisfy themselves by inspection or otherwise as to their accuracy. No person in this firms employment has the authority to make or give any representation or warranty in respect of the property.

