



**4 bed detached house to buy in**  
Glenholme Close, Washington, Tyne and  
Wear, NE38 0EW

**£300,000** Offers Over

 x4  x3  x1

Tenure

**Freehold**

### Property features

- ✓ Detached
- ✓ Four Bedrooms
- ✓ Driveway & Garage
- ✓ Close to Local Ammenities
- ✓ EPC Rating C

Driveway & Garage parking

## Key Information

- ✓ Council Tax: Band D
- ✓ EPC Rating: C
- ✓ Heating supply: Gas

## Description

Nestled within the highly sought-after residential area of Glenholme Close, Washington, this impressive four-bedroom detached home offers spacious and versatile accommodation ideal for modern family living.

Upon entering, you are welcomed by a bright and inviting entrance hall which leads through to a well-proportioned living room, perfect for relaxing and entertaining. There is also a dedicated dining area, providing an excellent space for family meals and social gatherings. The property boasts a contemporary fitted kitchen complete with a range of built-in appliances, complemented by a separate utility room for added convenience. A handy downstairs WC completes the ground floor.

To the first floor, the property offers four generously sized bedrooms, with the master bedroom benefiting from its own private en suite. A stylish family bathroom serves the remaining bedrooms.

Externally, the home continues to impress with a driveway and garage providing ample off-street parking, along with a well-maintained front garden. To the rear, a substantial garden offers plenty of space for outdoor entertaining, family activities, or simply relaxing in a private setting.

This fantastic property combines space, style, and a prime location, making it an ideal purchase for growing families seeking a home ready to move into. Early viewing is highly recommended to fully appreciate all that this home has to offer.

Council Tax Band: D

Tenure: Freehold

Price: Offers Over £300,000

Property Type: Detached House

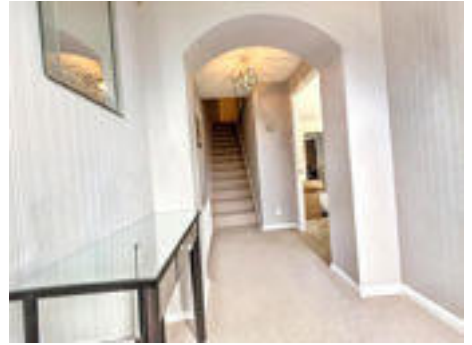
Parking: Driveway & Garage

Heating: Gas

## External Front



## Entrance Hall



## Living Room



## Kitchen



## Dining Room



## Utility Room



## Downstairs WC



## First Floor Landing



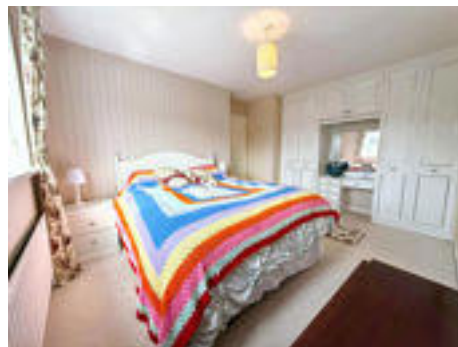
## Bedroom One



## En-Suite



## Bedroom Two



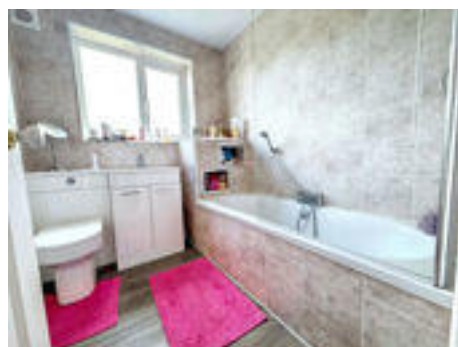
## Bedroom Three



## Bedroom Four




## Family Bathroom



## Exterior Garden





Energy Efficiency Rating		
	Current	Potential
<i>Very energy efficient - lower running costs</i>		
(92-100) <b>A</b>		
(81-91) <b>B</b>		83
(69-80) <b>C</b>	70	
(55-68) <b>D</b>		
(39-54) <b>E</b>		
(21-38) <b>F</b>		
(1-20) <b>G</b>		
<i>Not energy efficient - higher running costs</i>		
<b>England, Scotland &amp; Wales</b>		EU Directive 2002/91/EC 

Glenholme Close, Washington, Tyne and Wear, NE38 0EW

Contact your local branch today for more information on this property:

**19 West St. Marys Gate, Grimsby, Lincolnshire, DN31 1LE, Tel: 01472 311 113,  
enquiries@jacksongreenpreston.co.uk, <https://www.jacksongreenpreston.co.uk/>**

These particulars, whilst believed to be accurate are set out as a general outline only for guidance and do not constitute any part of an offer or contract. Intending purchasers should not rely on them as statements of representation of fact, but must satisfy themselves by inspection or otherwise as to their accuracy. No person in this firm's employment has the authority to make or give any representation or warranty in respect of the property.



<https://www.jacksongreenpreston.co.uk/> - 01472 311 113