



## 2 bed terraced house to buy in

Near Lands Close, Quinton, Birmingham,  
West Midlands, B32 1RS

**£145,000** Starting Bid

 x2  x1  x1

Tenure

**Freehold**

Driveway & Garage parking

## Property features

- ✓ Being Sold via Secure Sale Online Bidding, Terms & Conditions Apply
- ✓ Two Bedrooms
- ✓ Close to local amenities and transport links
- ✓ Garage
- ✓ EPC Rating C

## Key Information

- ✓ Council Tax: Band B
- ✓ EPC Rating: C
- ✓ Heating supply: Gas
- ✓ Electric supply: National Grid
- ✓ Water supply: Direct mains water
- ✓ Mobile signal: Good

## Description

Being sold via Secure Sale online bidding. Terms & Conditions apply.

A two-bedroom terrace house benefiting from off-road parking and a garage, offering spacious accommodation throughout and conveniently located close to local amenities, schools and transport links.

This two-bedroom home is situated within a quiet cul-de-sac in the popular area of Quinton, offering well-proportioned accommodation, a private rear garden and a garage.

The ground floor comprises an entrance hall, guest WC, fitted kitchen/dining room and a spacious lounge/dining room with direct access to the rear garden, creating a bright and practical living space.

To the first floor are two generous bedrooms and a family bathroom.

Externally, the property benefits from a private rear garden and a garage, providing useful storage or parking.

Conveniently located, the property offers easy access to local shops, schools, amenities and transport links, including the M5 motorway and regular bus routes into Birmingham City Centre. Ideal for first-time buyers, downsizers or investors.

Council Tax Band: B

Tenure: Freehold

Price: Starting Bid £145,000

Property Type: Terraced House

Parking: Driveway & Garage

Construction materials: Brick and block

Roofing type: Slate tiles

Risk of floods and or erosion: No

Flooded in last 5 years: No

Planning permissions or proposals for development: No

Coalfield or mining area: No

Listed property: No

Conservation area: No

Public rights of way: No

Adaptions for accessibility: No

Restrictions: No

Required access: No

Heating: Gas

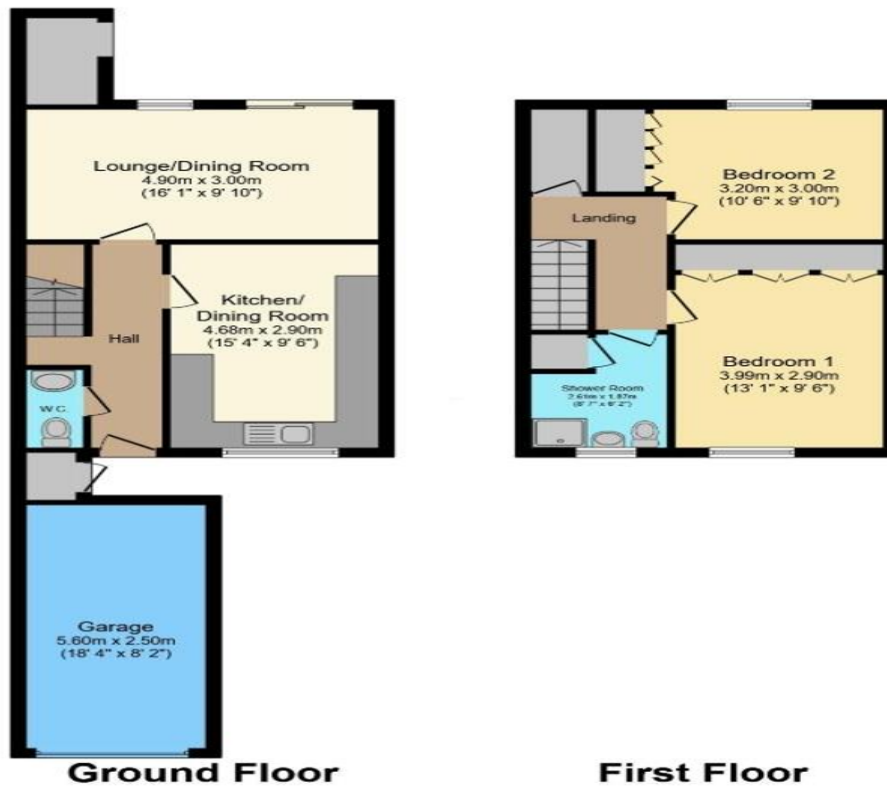
Electric: National Grid

Water: Direct mains water

Sewerage: Standard UK domestic

Air conditioning: No

Mobile signal coverage: Good



Energy Efficiency Rating		
	Current	Potential
<i>Very energy efficient - lower running costs</i>		
(92-100) <b>A</b>		
(81-91) <b>B</b>		87
(69-80) <b>C</b>	75	
(55-68) <b>D</b>		
(39-54) <b>E</b>		
(21-38) <b>F</b>		
(1-20) <b>G</b>		
<i>Not energy efficient - higher running costs</i>		
<b>England, Scotland &amp; Wales</b>	EU Directive 2002/91/EC	

Near Lands Close, Quinton, Birmingham, West Midlands, B32 1RS

Contact your local branch today for more information on this property:

**19 West St. Marys Gate, Grimsby, Lincolnshire, DN31 1LE, Tel: 01472 311 113,  
enquiries@jacksongreenpreston.co.uk, <https://www.jacksongreenpreston.co.uk/>**

These particulars, whilst believed to be accurate are set out as a general outline only for guidance and do not constitute any part of an offer or contract. Intending purchasers should not rely on them as statements of representation of fact, but must satisfy themselves by inspection or otherwise as to their accuracy. No person in this firm's employment has the authority to make or give any representation or warranty in respect of the property.

