



## 2 bed terraced house to buy in

Hood Street, Swalwell, Newcastle upon Tyne, Tyne and Wear, NE16 3HS

**£60,000** Starting Bid

 x 2  x 1  x 1

Tenure

**Freehold**

Driveway parking

## Property features

- ✓ Two bedroom
- ✓ Terrace house
- ✓ Situated in Swalwell
- ✓ Driveway
- ✓ EPC Rating E

## Key Information

- ✓ Council Tax: Band A
- ✓ EPC Rating: E
- ✓ Heating supply: Gas

## Description

We are pleased to present this two-bedroom terrace property located in area of Swalwell, conveniently close to a variety of local amenities and excellent transport links.

Upon entering, you will find a welcoming lounge. The kitchen diner provides a spacious area for cooking and enjoying meals, creating an ideal space for entertaining family and friends.

As you ascend the stairs to the first floor, you will discover the master bedroom, which boasts ample space and natural light, making it a perfect retreat. Adjacent to it is a well-designed bathroom, complete with modern fixtures for your convenience. The second bedroom is also thoughtfully sized, offering versatility for guests, a home office, or a child's room.

Outside, the property features a charming garden to the front, while the rear yard provides a private outdoor space for leisure activities. Additionally, a convenient driveway ensures off-street parking, adding to the property's appeal. This home is a delightful find for anyone looking for comfortable living in a friendly neighborhood.

Council Tax Band: A

Tenure: Freehold

Price: Starting Bid £60,000

Property Type: Terraced House

Parking: Driveway

Heating: Gas

## Entrance



## lounge

3.97m x 4.12m (13'0" x 13'6")



## Kitchen/Diner

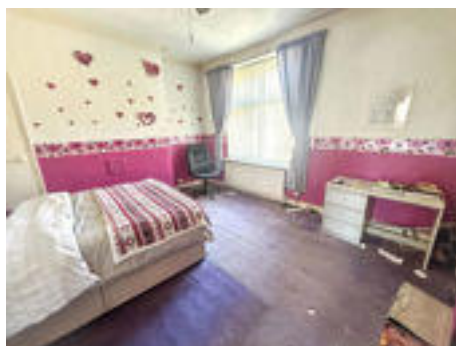
4.00m x 4.58m (13'1" x 15'0")



## Landing

## Bedroom one

3.73m x 4.00m (12'2" x 13'1")



## Bedroom two

4.25m x 3.02m (13'11" x 9'10")



## Bathroom

3.23m x 2.11m (10'7" x 6'11")



---


## Rear yard



---

## Driveway



Energy Efficiency Rating		
	Current	Potential
<i>Very energy efficient - lower running costs</i>		
(92-100) <b>A</b>		
(81-91) <b>B</b>		84
(69-80) <b>C</b>		
(55-68) <b>D</b>		
(39-54) <b>E</b>	40	
(21-38) <b>F</b>		
(1-20) <b>G</b>		
<i>Not energy efficient - higher running costs</i>		
<b>England, Scotland &amp; Wales</b>		EU Directive 2002/91/EC 

Hood Street, Swalwell, Newcastle upon Tyne, Tyne and Wear, NE16 3HS

Contact your local branch today for more information on this property:

**19 West St. Marys Gate, Grimsby, Lincolnshire, DN31 1LE, Tel: 01472 311 113,  
enquiries@jacksongreenpreston.co.uk, <https://www.jacksongreenpreston.co.uk/>**

These particulars, whilst believed to be accurate are set out as a general outline only for guidance and do not constitute any part of an offer or contract. Intending purchasers should not rely on them as statements of representation of fact, but must satisfy themselves by inspection or otherwise as to their accuracy. No person in this firm's employment has the authority to make or give any representation or warranty in respect of the property.



<https://www.jacksongreenpreston.co.uk/> - 01472 311 113