



3 bed semi-detached house to buy in NE23

Alexandra Chase, Cramlington, Northumberland, NE23 6AA

£194,950

🏠 x3 🚿 x2 🚻 x1

Tenure
Freehold

Allocated parking

Property features

- ✓ Great location
- ✓ High specification kitchen
- ✓ Driveway
- ✓ En suite
- ✓ Garden with open aspect

Key Information

- ✓ Council Tax: Band B
- ✓ Heating supply: Gas

Description

Set within a convenient and sought-after location, this lovely three-bedroom home is ideal for families and professionals alike, offering a great blend of modern finishes and practical design. Boasting an open outlook to the rear, while remaining perfectly positioned for easy access to local shops, amenities, and popular schools.

Inside, the heart of the home is a beautiful, contemporary kitchen complete with a striking quartz work top and a stylish porcelain inset sink. French doors connect the living room to the garden, creating an inviting spot for dining and entertaining. On the ground floor, a handy W/C ensures convenience for residents and guests alike.

Upstairs, the principal bedroom benefits from a sleek en suite, delivering a touch of luxury and privacy. Two further bedrooms and a bathroom complete the upper level.

Outside, a private driveway provides off-road parking. The garden, accessed via French doors and side path, is an ideal retreat for relaxation or a safe play area for children.

Positioned within close proximity to a range of local amenities, this property ensures that daily essentials, supermarkets, cafes, and scenic parks are all within easy reach. Excellent transport links offer swift connections to neighbouring towns and the city centre, making this home a superb base for commuters.

Don't miss the opportunity to make this wonderful house your next home.

Council Tax Band: B

Tenure: Freehold

Price: £194,950

Property Type: Semi-detached house

Parking: Allocated

Listed property: No

Conservation area: No

Heating: Gas

Water meter: No

Entrance hallway



Living Room



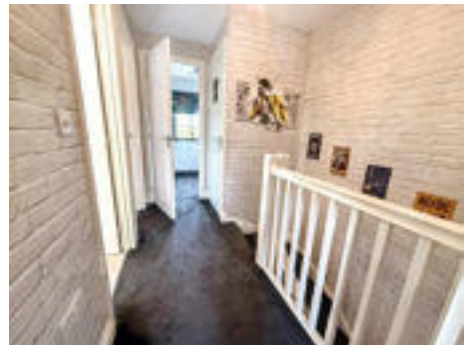
Kitchen



Cloaks W/C



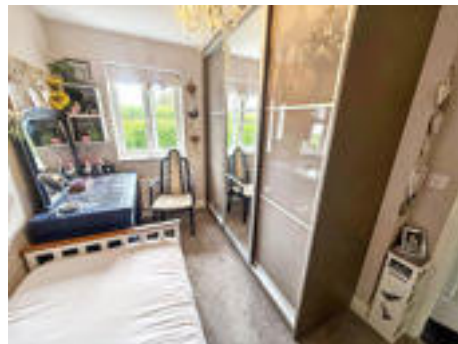
Landing



Bedroom 1



Bedroom 2



Bedroom 3



En suite



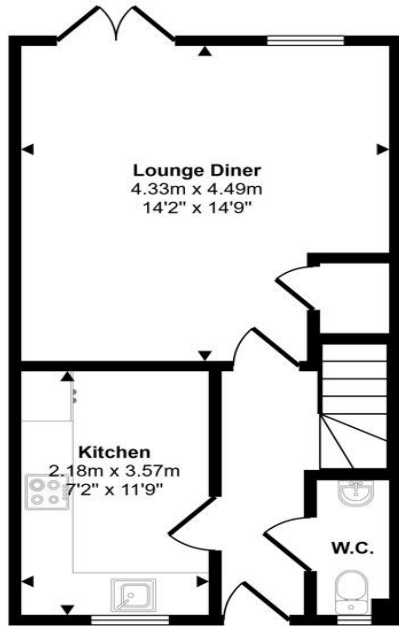
Bathroom



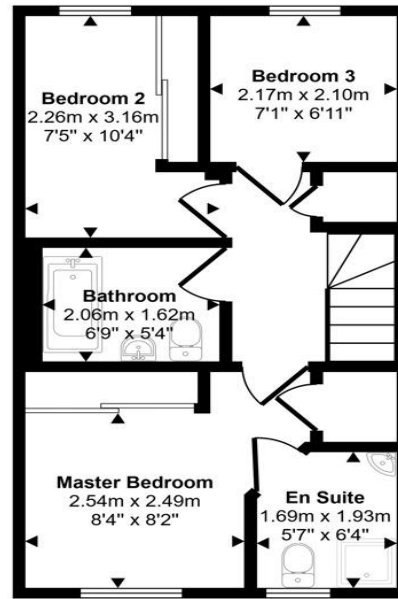
Garden



Approx Gross Internal Area
71 sq m / 764 sq ft



Ground Floor
Approx 35 sq m / 382 sq ft



First Floor
Approx 36 sq m / 383 sq ft

This floorplan is only for illustrative purposes and is not to scale. Measurements of rooms, doors, windows, and any items are approximate and no responsibility is taken for any error, omission or mis-statement. Icons of items such as bathroom suites are representations only and may not look like the real items. Made with Made Snappy 360.

Alexandra Chase, Cramlington, Northumberland, NE23 6AA

Contact your local branch today for more information on this property:

**19 West St. Marys Gate, Grimsby, Lincolnshire, DN31 1LE, Tel: 01472 311 113,
enquiries@jacksongreenpreston.co.uk, <https://www.jacksongreenpreston.co.uk/>**

These particulars, whilst believed to be accurate are set out as a general outline only for guidance and do not constitute any part of an offer or contract. Intending purchasers should not rely on them as statements of representation of fact, but must satisfy themselves by inspection or otherwise as to their accuracy. No person in this firm's employment has the authority to make or give any representation or warranty in respect of the property.



<https://www.jacksongreenpreston.co.uk/> - 01472 311 113